



Island Falls Lakes Association

Letter to Members of IFLA

October 2006

If you missed the annual meeting / lobster / steak dinner for the Island Falls Lakes Association, don't let history repeat itself, plan to join the great food, fun and conversation next year! Thanks to all who planned, prepared food, cooked or helped in any way to put on this wonderful meal; it rattled the "cobwebs" of over one hundred people. This kind of turn out reinforces the strength and fellowship of the Association.

There are many things that we can do to make the Association better; we just need the involvement of our membership. Imagine if our lakes' were polluted, or our children could not swim, fish or do any other recreational activity in the waters of our lakes. Who would we turn to for help? My guess is that phones would start ringing and help from the Lakes Association would be welcome. Aside from the loss of recreational use, property devaluation also would be an issue.

The Lake's Association is there for you. If you are not a member, or know someone who does not belong, let us fire up and get them on board! We need all lake shore owners to be informed and to actively seek measures to assure the safety of our lakes and the waters feeding them.

The Association's Board of Directors has met regularly throughout the summer to work for you in the areas of water quality, phosphate run-off, sponsoring the canoe race for local Dollars for Scholars scholarships, camp road maintenance and drainage to name a few. Thank-you to all who attend to all these issues of concern - your work is appreciated.

As the summer season comes to a close, I hope it was a good one for you. Regretfully closing up camp, battening down the hatch, putting away summer fun stuff brings closure to one more summer season packed with memories. I suspect that the shortness of the season is what makes it so poignant and special.

For those of you who get to utilize your property year round, a new season is just around the corner! A season that to me is unique and special in its own beauty, with a different set of fun activities and challenges. See you on the trails! Enjoy...

Steve Edwards
President, IFLA

2006 Annual Meeting

The Island Falls Lakes Association held its annual meeting on July 22 at Big Valley Sno Club. A committee came together planning a lobster & steak supper to attract more interest in our annual meeting. This was a big success; the meal was excellent, camaraderie was great and we had the largest attendance ever at an IFLA Annual meeting with over 100 members. Thanks to all who helped pull this together.

Steve Edwards, Pres. presided. The secretary's report and treasurer's report were given and accepted. Trustee changes were as follows - Pres. Edwards nominated the following for a second term: Gary Thomas, Sherry Pettyjohn and Norm Harte. All were voted in at the meeting. The officers were elected at the same time with Steve Edwards as president, Peter Powers as vice-president, Candy Guerette as secretary and Pam Oliver as treasurer.

Other items covered at the meeting included: the new signs and buoy informing the public on the slow speed zones; donations were made to the Town of Island Falls and Dyer Brook, in the amount of \$500 per town for road repair; a donation was also approved that evening for \$500 for SACHS Dollars for Scholars.

Daniel Robertson
Detective

1-800-432-7842
(207) 532-3471
538-6215 (Cell)

STATE OF MAINE

COUNTY OF AROOSTOOK
SHERIFF'S DEPARTMENT
26 Court Street, Suite 101
Houlton, Me 04730

James P. Madore
SHERIFF

Craig L. Clossey
Chief Deputy

The following is a list of tips to keep in mind when your camp is going to be vacant for an extended period of time:

- Lock all doors and windows (don't forget the outbuildings)
- Close the curtains and or blinds (some people may disagree with this. Some feel that it keeps the interior out of sight, out of mind while others may feel that it could result in a break in just to see what is in there.)
- Remove valuable belongings especially priceless, non replaceable items. Rule of thumb: If you can't live without it, don't leave it at the camp.
- Display a sign stating that all valuables have been removed.(some people do not agree with this as it is their opinion that a prospective burglar may consider the sign as a bluff)
- Do not leave any firearms, medication, liquor or cash behind (these are very common targets)
- Check your camp periodically if at all possible. (keep track of your visits. This information is very useful in determining a time frame if a break in does occur)
- Ask a few year-around residents in the area to help you watch your camp (do this even if you check it yourself). Ask them to keep track of their efforts too and to please report any suspicious activity.
- If you have electricity, consider using motion lights (inside and out) Interior lights on timers can also be a deterrent.
- Consider an alarm system if possible and/or practical. There are several vendors in the area who deal in alarm system sales and service and would be more than happy to give you some professional advice.
- Have the drive way plowed if practical (very useful for fire trucks as well giving your camp that "lived in look")
- If your camp is heated during the winter, your fuel oil delivery driver would be a good source to report suspicious activity.
- Make sure local law enforcement (including the local Game Warden) has the camp owners contact numbers and info. (A master list for the entire area would be very useful)

People are not always the culprits. Some reports of camp break ins are simply the building being heaved by the frost coming out of the ground during the spring, which can result in a door popping open on its own. When the camp owner finds an open door and nothing else is disturbed (door still locked) we can quite often blame Mother Nature. This is especially true in older camps that are set on bed logs or wooden punchings rather than cement.

Food for thought: Did you ever stop to wonder about how much snow weighs? According to the US Weather Bureau in Caribou, one cubic foot of snow weighs between 30 and 50 pounds, depending on its water content. (I didn't believe it either until I weighed it for myself) This adds up to astronomical amounts of weight on your roof. You do the math for yourself. After you have figured it out you will probably have to double check your figures because you won't believe it the first time. You will then most likely make plans to shovel your roof from time to time or, at the very least, arrange to have someone else shovel it off for you.

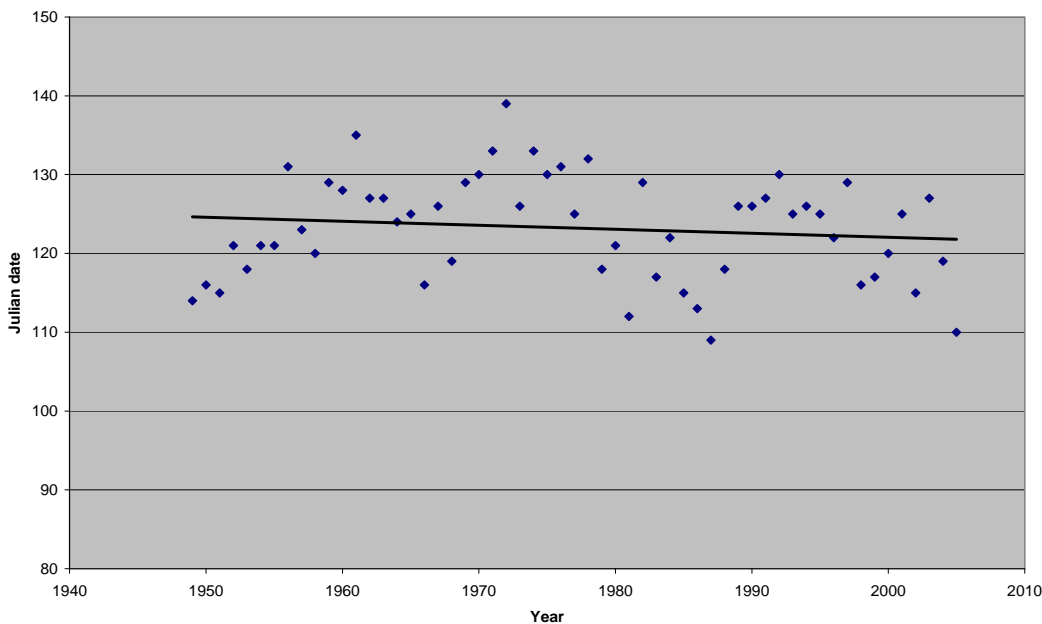
Water Quality Report

Pleasant Lake: (*Midas: 1728*) Water quality monitoring data has been collected since 1974 with 14 years of more inclusive state data. The quality of the water for Pleasant Lake is considered to be above average with a low potential for a nuisance algal bloom. The average transparency for 2006 was 10.5 meters which is down from last year, but better than the average of 10.0 meters (33.3 feet). This indicates that light can reach the plants on the bottom, allowing for photosynthesis to replenish oxygen levels at depth. Although the phosphorus tests for this year are not back yet, last year's results put total phosphorus (TP) in the 4-9 parts per billion (ppb) range. The potential for phosphorus to leave the bottom sediments and become available to algae in the water column is low. Dissolved oxygen (DO) profiles for this year show very little DO depletion in the deep areas of the lake. Oxygen levels below 5 parts per million (ppm) stress certain cold water fish and a persistent loss of oxygen may eliminate or reduce habitat for sensitive cold water species. Our levels were in the 7-9 ppm range. Pleasant Lake remains on the DEP "Priority Watershed List" due to the increased development and lumbering efforts in its small watershed.

Mattawamkeag Lakes: (*Midas: 1686*) Data has been collected by us since 1972 with 11 years of more inclusive state data. The water quality is considered to be slightly below average with a moderate to high potential for nuisance algal blooms. Average transparency readings for 2006 were 3.6 m (11.5 ft). This is about the same for the upper lake, but down for the lower lake. Total phosphorus for last year was in the 9-20 ppb range with a moderate potential for phosphorus in the bottom sediments to get resuspended in the water column. DO profiles for the summer show oxygen depletion in the deep areas of the lake. Surface waters were in the 7-8 ppm range throughout the summer. 9-10 meters deep, however, the oxygen levels were at 0-2 ppm.

Ice-out data Using the Edward's Family data from last year's newsletter, I attempted to add Pleasant Lake ice-out data to the state information given on the website mentioned at the COLA meeting (below). Although I was not successful, I did graph that data over time to see what it looks like

Ice-out data Pleasant Lake



Interesting slight downward trend does seem to say that ice-out is occurring earlier in the year over time. Changes in lake ice-out dates over time can affect important characteristics of lakes, such as the rate of change of summer oxygen levels (Stewart, 1976), and the health of important parts of the food chain (Maeda and Ichimura, 1973; Porter and others, 1996)."

Respectfully submitted: Sherry Pettyjohn

Source: <http://me.water.usgs.gov/iceout.html>

Resources

www.MaineVolunteerLakeMonitors.org

<http://www.pearl.maine.edu>

<http://www.maine.gov/dep/blwq/lake.htm>

www.maineaudubon.org

www.BRILoon.org (the education page)

<http://www.maineaudubon.org/conservation/citsci/loon2.shtml>

<http://www.maineaudubon.org/conservation/loon/index.shtml>

MEMBERSHIP INFORMATION – As an owner of waterfront property your membership and support is essential in making the quality of our beautiful lakes. Thanks to those who have supported IFLA in past years. Benefits of membership:

- ◆ Monitoring of lakes for water quality
- ◆ Grant monies available pollution control projects and roads
- ◆ Educational material, guest speakers
- ◆ COLA affiliation

Enrollment form: Dues: \$10 per person - \$20 per family. Payable to IFLA, Box 63, Island Fall, ME 04747

Name: _____

Phone: _____

Address: _____

e-mail: _____

Island Falls Lakes Association
PO Box 63
Island Falls, ME 04747